

**Loughborough**  
COLLEGE est. 1909

# POST-16

## PROSPECTUS 2024/25



# LOUGHBOROUGH COLLEGE OPEN DAYS

**At our Open days, you will be able to:**

- Meet our Tutors and find out about our wide range of courses
- Talk to our Student Support teams about learner support and financial help
- Get advice on how to apply and the application process
- Meet the Apprenticeships team and check out our Apprenticeships vacancies
- Discover what it's like to be a Loughborough College student
- Explore the College Campus

Visit **[www.loucoll.ac.uk](http://www.loucoll.ac.uk)** for the latest information

# Welcome to Loughborough College

**Hello, a warm welcome to Loughborough College.  
We are delighted to share with you information about  
the courses we have on offer.**

We are an inclusive and vibrant community and I hope you enjoy learning more about what makes our College so special in the following pages.

Whatever your next steps may be, we have a range of courses to support your future, offering qualifications from Level 1 through to studying for a degree. As well as our internationally renowned sports programmes we have a vibrant Sixth Form, a successful Higher Education department and outstanding apprenticeships and work placements.

We are well-known for our student-first approach. Our health and wellbeing focus is a top priority for us and we have a fantastic safeguarding team on hand at the College which includes our wonderful therapy dogs.

As part of our commitment to provide the best facilities for our learners, we are thrilled to be currently investing £21m in our campus, including our Institute of Technology, Digital Skills Hub and state of the art Sports Hall. We've also listened to student feedback and have invested in multiple social spaces for our learners to interact and develop.

Our vision of shaping futures, transforming lives, and broadening horizons underpins everything we do at Loughborough College, ensuring we are here to guide you every step of the way.



Best wishes,

**Stuart Lindeman**  
**Chair of Governors**

# Contents

Our campus	4	Sporting Success	22	T-Levels	40	Study with us	56
Our values	6	Home of the NFL Academy	24	Apprenticeships	42	STEM	66
Campus development	8	Sport facilities	26	Apprenticeship levels explained	43	Can we help?	67
The NEW T-Levels centre	10	Support	28	Careers and employability	44	FAQs	68
Radmoor Centre	12	Good for me, Good for FE	30	Proud to partner with...	46	Easy to find	70
Esports suite	14	Loughborough Students' Union	32	International students	48	How to get here	72
Facilities	16	Ways to learn	34	Study a degree	50	Bus passes	74
Accommodation	18	Options after GCSEs	36	Fees and funding	52		
The Talent Factory	20	Course levels	38	Application process	54		



# Our campus

We're always working to improve our campus to give our students the best in facilities and technology.

- |                      |                             |                        |
|----------------------|-----------------------------|------------------------|
| 1. 2012 CENTRE       | 10. MAIN ENTRANCE           | 18. B BLOCK            |
| 2. A LEVEL BLOCK     | 11. MOTOR VEHICLE WORKSHOP  | 19. RECEPTION          |
| 3. ACCOMMODATION     | 12. PHOTOGRAPHY STUDIO      | 20. RECORDING STUDIO   |
| 4. ART BLOCK         | 13. ESPORTS SUITE           | 21. THE VIEW           |
| 5. BICYCLE STORAGE   | 14. RADMOOR HAIR AND BEAUTY | 22. RUBBER CRUMB PITCH |
| 6. CENTRAL COURTYARD | 15. RADMOOR KITCHENS        | 23. THE BOX OFFICE     |
| 7. ENGINEERING       | 16. RADMOOR NURSERY         | 24. SPORTS HALL        |
| 8. HE CENTRE         | 17. RADMOOR RESTAURANT      | 25. T-LEVELS CENTRE    |
| 9. LIBRARY           |                             | 26. NFL ACADEMY        |



**T-LEVELS  
CENTRE**  
NOW OPEN!

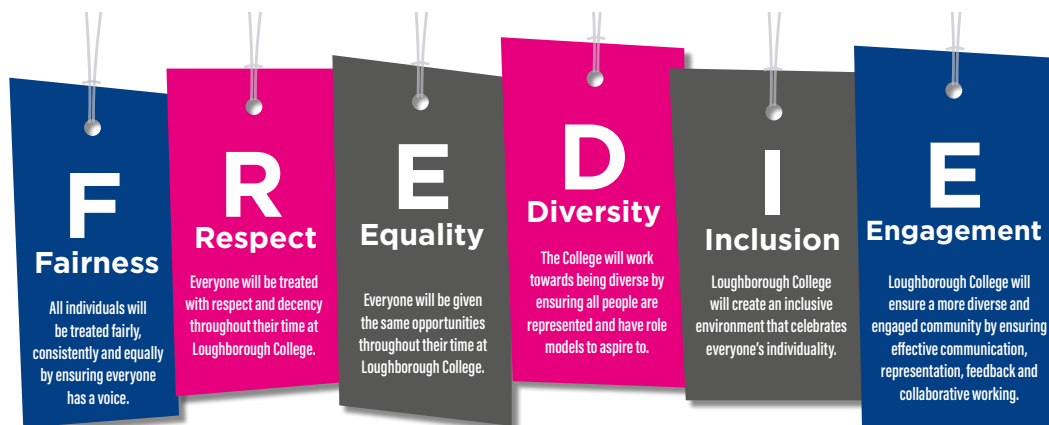
25



CHECK OUT OUR  
VIRTUAL CAMPUS  
TOUR



# Our Values



Loughborough College is dedicated to providing equality of opportunity for all and valuing, promoting and celebrating the diversity and individuality of our learners, staff and stakeholders.

We are all responsible for ensuring that all individuals receive the same opportunities to develop, grow and achieve their full potential, regardless of personal circumstances and individual differences.

We are proud of our inclusive ethos have been awarded Investors in Diversity accreditation and named in the UK's top 20 most inclusive organisations.

## 94%

FE student satisfaction  
in 2022/23

## 98%

of students progress to  
**HE, Apprenticeships or**  
work within six months

## Gold Rating

for **HE student**  
**experience** (TEF Result)

## Outstanding

Ofsted rating for **Apprenticeships**  
in November 2021

## £34m

invested in **facilities**  
and **resources**

## 1<sup>st</sup>

for **Student Experience**  
(Loughborough Students'  
Union)

## 600+

**Employer**  
**partners**

## Enrichment

wide range of **opportunities**



# Campus Development

## Sports Hub

**A new state-of-the-art Sports Hub is set to further enhance elite-level training facilities offered at Loughborough College.**

The College has secured £9.91 million from the Department for Education (DfE) to create a new three-storey, 3,000sqm facility as part of a wide range of multi-million pound improvements on its Radmoor Road campus.

The new building will house a modern sports hall with a viewing terrace and outstanding changing facilities. It will also feature contemporary classrooms, flexible learning spaces, breakout areas and a small staff base.



The Digital Skills Hub will also aim to deliver:

- T Levels, Apprenticeships and Kickstart job placements to skill-up local people as Loughborough moves into a more digitally focused future
- Target unemployed and semi-skilled adults to support them into employment
- Equip the next generation with the skills and knowledge to improve social mobility, human capital and economic success
- Reduction in local travel to access skills, contributing to our commitment to clean growth and carbon reductions in Loughborough

## Digital Skills Hub

**Loughborough College's exciting new Digital Skills Hub will provide quality teaching and facilities, which aim to boost the skills of our communities and ensure the local and regional economy has the workforce needed to support Industry 4.0.**

As well as boosting skills, the Hub will also work with employers to deliver a greater breadth of work placement opportunities and better support regional industry.



## IoT Centre

**Loughborough College, the University of Derby, Loughborough University and the Derby College Group (DCG) have joined forces on a £13m plan to create the highly advanced workforce needed to lead the digital revolution – otherwise known as Industry 4.0.**

The East Midlands IoT will focus on levelling up the critical engineering, manufacturing and digital skills needed by employers to address the grand engineering challenges of clean growth by embracing the advanced skills required for AI and a data-driven economy. Graduates will be part of a net zero carbon workforce and support the UK's journey to net zero greenhouse gas emissions by 2050.

Based in the heart of the East Midlands, the IoT would:

- Support students by specialising in programmes such as Engineering and Manufacturing Technologies; Information and Communication Technology; Science and Mathematics and Construction, Planning and the built environment
- Work closely with global powerhouse employers, including Rolls-Royce, Toyota, National Grid ESO, Alstom, Fujitsu, Uniper and Bloc Digital, to ensure programmes level up the workforce with the right skills
- Create an exciting new Institute of Technology (IoT) Centre in Loughborough, with students able to access all four sites, including world class training environments in Derby at the University of Derby's Enterprise Centre and DCG's Roundhouse Technical and Professional Skills College

# T-LEVEL Centre Now Open!

Our exciting new £3.1 million T Level Centre at Loughborough College provides cutting edge facilities with high-quality, flexible teaching and learning spaces to specifically meet the needs of the new T-Level qualifications. This contemporary building, supported by the Department for Education, opened in September 2022.



For more information about T-Levels, please look at page 40 or visit: [www.loucoll.ac.uk/t-levels-courses](http://www.loucoll.ac.uk/t-levels-courses)



# Radmoor Centre

The Radmoor Centre is a working, learning environment for our Health and Fitness, and Hospitality and Catering students. It provides exceptional facilities and invaluable hands-on experience under the guidance of award-winning tutors.

## Hair and Beauty

The Radmoor Centre Training Salon allows Barbering, Hair and Beauty students to develop their practical and soft-skills on real clients under close supervision of their fully qualified lecturers. Using a modern hair salon and specialist beauty treatment rooms our learners benefit from enhancing their training in a simulated real working environment and achieve a professional working philosophy.



## Health and Fitness

Radmoor Health and Fitness offers modern sport and exercise facilities, including:

- Dance and exercise studio
- Four-court sports hall
- Floodlit outdoor 4G pitch

## Restaurant and Bar

The Radmoor Restaurant provides a fine dining experience, created by our Hospitality and Catering students. Service spans lunch, drinks and dinner, plus special themed evenings, buffet lunches and commercial catering, giving students experience in a variety of culinary techniques and service.

Our talented chefs use delicious, fresh produce sourced from quality, local suppliers so you can be sure that your food will be of the highest standard.

As a Hospitality and Catering student, you'll have opportunities to enter local, national, and international competitions.



# Esports Suite

**Our new Esports suite aims to help students level up their gaming and business skills.**

The classroom has been kitted out with around 40 top-of-the-range gaming PCs, big screens, and gaming equipment to support students on the College's new Esports BTEC Level 2 and 3 qualifications.

**Danny Lee**  
Curriculum Manager for the Esports programme, said:

**“We are so excited to welcome our Esports students to our cutting-edge gaming hub.**

“Of course, Esports isn't just about playing video games – it is mainly about the industry that orbits gaming including business, marketing, entrepreneurship, media and broadcasting.

“It will help unlock the potential of students who want to forge a career in the video gaming industry.”

The room is also home to the College's new competitive Esports team, the Loughborough Lycans, which will compete nationally in a range of competitions and tournaments.

For more information about our Esports programme, please visit:  
[www.loucoll.ac.uk/esports](http://www.loucoll.ac.uk/esports)



## Our partnership with Williams Esports and Motorsport UK

**We've teamed up with Williams Esports and Motorsport UK to deliver new opportunities in the Esports sector to budding drivers as part of a unique education partnership.**

The nationally leading initiative will enhance the College's current performance pathway programmes for young, talented drivers and enable the partners to share their expertise and experience to ensure the best possible education is provided to learners.

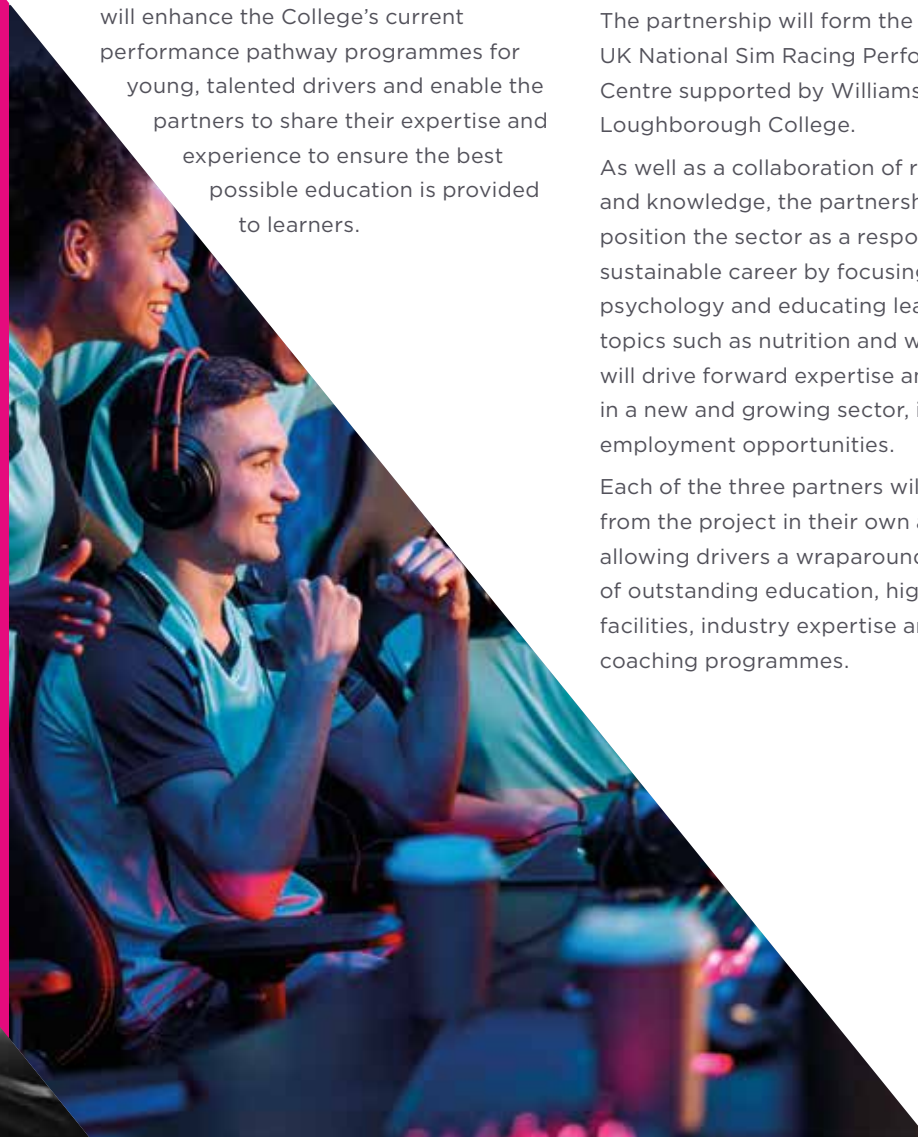
**WILLIAMS**  
**ESPORTS**



The partnership will form the Motorsport UK National Sim Racing Performance Centre supported by Williams Esports at Loughborough College.

As well as a collaboration of resources and knowledge, the partnership will position the sector as a responsible and sustainable career by focusing on sport psychology and educating learners on key topics such as nutrition and wellbeing. It will drive forward expertise and insight in a new and growing sector, including employment opportunities.

Each of the three partners will benefit from the project in their own areas, allowing drivers a wraparound experience of outstanding education, high quality facilities, industry expertise and leading coaching programmes.





# Facilities

Our campus boasts a different kind of classroom experience. With employability at the heart of everything we do, we make sure that our facilities are equipped to prepare you for the world of work, with some classrooms equipped to mirror industry.

## Did you know?

Our students regularly perform shows throughout the year, including plays, pantomimes and concerts.

## Technology Centre

We've got some of the best engineering, electrical installation and motor vehicle workshops in the East Midlands, offering access to industry-standard machinery and tools.

## Fitness and Sports Centre

Our top-class Fitness and Sports Centre hosts a teaching gym, sports analysis suite and four-court sports hall. Students studying Sport also have access to on-site athlete consultation rooms, as well as the Radmoor Centre's sports hall and gym.

## Radmoor Childcare

Located on the college campus the Radmoor Nursery offers a full day care facility for children up to school age. The nursery is rated 'Good' by Ofsted and is open to children of college students and staff as well as the general public. Radmoor Childcare also run additional after-school and holiday clubs. To find out more visit [www.radmoornursery.co.uk](http://www.radmoornursery.co.uk)

## Library

Located in the Hub, the library has a range of drop in and bookable computer facilities. You can book small rooms for group work and borrow a wide range of academic books. There is also a large collection of e-resources, e-books and e-journals which can be accessed both on and off site.

## Arts Academy

Opened alongside the Hub in 2014, the Arts Academy is home to a range of industry-standard facilities, including rehearsal spaces, a dance studio and a 220-seat theatre.



# Accommodation

Our accommodation is officially rated **Outstanding** by Ofsted, especially for the quality of our pastoral care and support. It has everything you need to feel happy and settled while you're studying with us, giving you the perfect balance of independence and support. We've even got dedicated blocks of en-suite rooms just for under-18s.



## The Elite Athlete Performance Centre

This stunning listed building houses 17 en-suite rooms specifically for elite sport students under the age of 18. Refurbished for student living, facilities include a huge living space with a modern shared kitchen and most importantly, free laundry! Room sizes range from standard to large, with full access to all of the other communal areas on-site.

## The Gables

- 5-minute walk from the college campus and students' union
- 10-minute walk from the town centre and large supermarkets
- 181 single bedrooms
- Communal laundry, outdoor spaces and common rooms, variously equipped with TVs, games consoles and table tennis
- Five or six person flats with shared or en-suite bathrooms
- Rooms adapted for disabled students (subject to assessment)
- Wi-Fi and network points throughout
- Regular social activities



# WELCOME TO THE TALENT FACTORY

They say  
**LEGENDS** are born,

We say  
**LEGENDS ARE MADE...**

## THOMAS YOUNG MBE

## T38 SPRINT



“ The second I went to Loughborough College the teachers were fantastic, every teacher made you feel welcome and wanted you to succeed academically, but also in your sport. Knowing this really made my time there special and exciting. Every single lesson I had there has a purpose but was really enjoyable too.

Loughborough College has helped my career academically by helping me achieve the grades I wanted and helped me with life skills which will always be useful in my career. ”

Our students have gone on to  
**ACHIEVE GREAT THINGS**

Scan the code to view their profiles:



## ELLEN RAMSBOTTOM

## RUGBY

“ One thing that makes Loughborough College special, is the ability for lecturers to provide more one-on-one time for you, making the learning experience much more personal and engaging.

Loughborough College has helped my career by helping me to balance my degree alongside my sport, if they weren't as supportive I wouldn't be able to compete in my sport as well as am now. ”



## ABBIE BREAKWELL

## TENNIS



“ To study in a place and follow in the footsteps of such highly esteemed athletes was an honor. Being a Loughborough College student has been a very positive experience helping me to become more independent and resilient.

Loughborough College has supported me as a dual career athlete (elite wheelchair tennis player and sport student). This helped to empower me to make the best of difficult situations while gaining success both on the tennis court and in the classroom. The learner support team and sport lecturers mentality helped me to develop greater confidence and they fully supported me during unprecedented times, helping me to gain positive outcomes and a promising future. ”



Sport has always been at the heart of studying in Loughborough.

Whether you're training competitively, keeping fit or just playing for fun, there's something for everyone.

## Sporting Success

It's been a fantastic few years at Loughborough College for sport with many students and alumni competing in a range of competitions including the **Olympics, Paralympics** and **Commonwealth Games**.

**Seven of our Olympic alumni** shone on the world's biggest sporting stage and came home with medals. Matching the achievements of the Loughborough College Olympians our **Paralympic alumni** also came home with seven medals.

Loughborough College students past and present also brought home **22 medals**, including **four golds**, during the **Commonwealth Games** in Birmingham.

More than 50 alumni competed at the Games, securing four gold, nine silver and nine bronze medals during the incredible festival of sport.

## TASS Athletes

TASS (Talented Athlete Scholarship Scheme) is a Sport England-funded partnership between talented International and National level athletes, Loughborough College and national governing bodies of sport. We work together to bring the best out of our country's most exciting young talents. The TASS scheme helps athletes in education – aged 16-plus – to get the very best from their sporting and academic careers without having to choose between the two.

## Loughborough College Sport

Loughborough College Sport provides a student-athlete experience in a range of sports from competitive to high-performance programmes, including training and sports science support. Teams can also compete in competitions including the Association of Colleges Sport.

## Elite Sport

Our Elite Sport programmes help student-athletes to uphold their sporting commitments. This includes studying year-round to reduce the number of study hours per week, allowing breaks to accommodate competitions or training, offering online learning, extended time frames and 1:1 tutorials.

## Sport Inclusion Hub

We're smashing down barriers after becoming one of only 12 UK 'inclusion hubs' which give students with disabilities more exciting opportunities to excel in sport.





# Home of the NFL Academy

The National Football League's UK-based NFL Academy relocated to Loughborough College and Loughborough University at the start of the 2022-23 academic year.



[www.nflacademy.com](http://www.nflacademy.com)

Set up in 2019, the NFL Academy provides students aged 16-19 with pathways into employment, further education and the opportunity to play NCAA college football in the United States by combining full-time education with professional-level American football coaching.

Since September 2022, all football and academic operations moved to Loughborough, where a partnership between the College and the University

provides young players with an opportunity to become part of a world-renowned centre of sporting excellence. Throughout the partnership, Loughborough College is providing high-quality coaching, education, accommodation and pastoral support to its cohort of players, while the University is providing performance staff and world-class facilities to focus on the physical development of students.

**This unique opportunity is open to students aged 16-19.**

Entry into the Academy is based upon a series of physical try outs, along with a one-to-one interview and educational assessment. Successful students will be offered provisional places, dependent on meeting academic requirements.



# Sport facilities

Loughborough College has fantastic sporting facilities, and our students can even access facilities at Loughborough University, just over the road.



## 2012 Centre

This dedicated sports facilities centre hosts a teaching gym, four-court sports hall, golf analysis and swing room, as well as a sport and exercise physiology laboratory.

## Radmoor Health and Fitness

Based in the Radmoor Centre, facilities include a sports hall and dance and exercise studio.

## 4G Pitch

We have a full-size state-of-the-art floodlit 4G pitch and grass pitch.

**We are proud to be one of the biggest and most successful sports colleges in the country and we aim to continue to develop future generations of talented athletes.**

### DID YOU KNOW?

Our Instagram feed regularly highlights student's opportunities and success

 [@loucollsport](https://www.instagram.com/loucollsport)



# Support

**Whichever route you choose, we're here for you every step of the way.**

We have a four-legged staff member who has been recruited to support student's mental health on campus. Cockapoo **Mylie** is an incredible icebreaker and has a huge calming influence among our staff and students.

## Welfare and Development

We're very much invested in our students and have a range of teams dedicated to your welfare and development. These include the Mental Health team, Wellbeing Mentors, Inclusion team and Safeguarding Officers. If you require support there is someone here for you to speak to. We offer 1:1 appointments as well as inclusive support groups, we also provide a sexual health clinic three times a week.

## Progress

If you're a full-time student, you'll see a lot of your teachers and your progress tutor. Between them, they can offer all kinds of support and advice, and will work with you to set targets, so you're clear about your goals and ready for your next steps.

## Practical Things

The Learner Services team are here to answer your financial, travel, application and accommodation questions. They can also help you to find out more about the financial, legal, educational, disability and international advice available through Loughborough Students' Union.

## Money Matters

There are loads of options available to help with the expense of studying, including help with childcare, kit, and travel costs. We also offer cash payments based on attendance.

## Additional Support

Our dedicated support network helps to make sure that all students get the most from their college experience, regardless of any support needs or disabilities. We have specialists in ASD, physical disabilities, learning difficulties, and mental health, who are on hand to support you throughout your time with us.



# Good for Me, Good for FE



Co-founded by Loughborough College, we're part of a nationwide fundraising campaign which drives sustainable community action in colleges across the UK, encouraging students to get involved with a range of fundraising and volunteering opportunities.

So far, Loughborough College has raised over £258k for the Good For Me, Good For FE campaign. Highlights over the last year included:

- **Team 1909** – Our staff walking group raised hundreds for three local charities on their 106km Isle of Wight Ultra-Challenge.
- Staff and students raised over £2,000 during a **24-hour sportathon**.
- Vital funds and awareness raised for **youth mental health** charities.
- **Donation boxes** in The Hub for unused sports equipment.
- Dozens of hours of **volunteer work** contributed by staff and students to local and national charities, community causes, and campaigns.
- Our new **Student Volunteer Academy** launched offering learners opportunities to get involved across College and the local community.

However you give back, YOU can make a difference to lives across the UK with the **Good for Me, Good for FE** campaign.



## Loughborough College Enrichment

Enrichment gives students the opportunities to try new and varied activities that are outside their programme of study and encourage them to pursue wider goals.

## Loucoll Active

You don't need to be studying sport to participate in physical activities. Our Loucoll Active programme is a great way to meet new people and try new physical activities so you can -

**GET ACTIVE**  
**BE ACTIVE**  
**STAY ACTIVE**



# Loughborough Students' Union

## Rag

Take part in some of the most challenging and rewarding projects in the world, from skydiving to dog-sledding across the Arctic Circle, raising over millions for local, national and international causes.

## DID YOU KNOW?

LSU is one of the biggest students' unions in the country.

## Societies

Whatever you're into, LSU has a society for you. There are nearly 100 to choose from, ranging from art and music to off road driving and gliding—and if you think there's one missing, you can set it up and chair your own club!

## Action

Action is a fantastic way to maximise your college experience and enhance your CV with rewarding volunteer work. Throughout the academic year, students can participate in over 50 projects including working with young people, the elderly and disabled, as well as aiding overseas communities in places such as Romania, Nepal, Thailand and Uganda.

## Media

LSU's multi-million-pound media centre gives you the chance to get hands-on with student media and journalism. You'll have plenty of opportunities to build your portfolio and gain experience while working for our award-winning TV station, 24/7 radio station, magazine, and photography studio.



# Ways to learn

Once you've done your GCSEs, you've got many options to choose from. The most important thing is finding the option that suits you best.

## DID YOU KNOW?

Universities accept a wide range of qualifications, including BTECs

## T-LEVELS

THE NEXT LEVEL QUALIFICATION

T Levels are equivalent to studying three A Levels. They provide a high-quality technical alternative to academic exams and will suit students who enjoy combining classroom and work placed learning. Find out more on page 40-41.

## English Language and Maths

Whether you missed out on the opportunity to obtain GCSE English Language and/or Maths at grade C/4 or above at school, or you want to improve your grade, we're offering you the chance to achieve these essential qualifications that most employers and universities require. GCSE or Functional Skills qualifications in English Language and Maths will allow you to take the next steps in your career, or progress into further study.

## BTECs

BTECs and other vocational diplomas usually last up to two years. They involve a significant level of practical work, as well as completing assessed coursework and, in some instances, taking exams. They carry UCAS points, which are aligned to those for A Levels, so you can still progress to higher education if you wish to. Alternatively, you can pursue employment or an Apprenticeship.

## A Levels

A Levels last for two years and allow you to focus on the academic subjects that you enjoy the most. It's an academically demanding route and is entirely exam-focused. Students usually progress to higher education, or may pursue employment or an Apprenticeship.

## Access To Higher Education

Our Access to Higher Education qualifications prepare students for degree-level study. These one-year courses, in a variety of disciplines, are designed for adult learners (aged 19+) who would like to study in Higher Education but don't quite meet the formal entry requirements or for those who have been out of education for a while.

## Apprenticeships

Apprenticeships last between one and four years and are available in many sectors, offering hands-on experience, a qualification and a wage. You have the opportunity for progression with Apprenticeships starting at Level 2 through to Level 6. Please take a look at our Apprenticeship offer and find out the Apprenticeship perfect for you.





# Options after GCSEs

We will offer you the Level that is most suitable for you based on your GCSE results and your English and Maths grades.

	SUMMARY	LEVEL OF STUDY AVAILABLE	COURSE DURATION	WORK PLACEMENT?	EXAMS/ COURSEWORK?	PROGRESSION ROUTES
<b>A LEVELS</b>	An academic qualification, usually study 3 A Level subjects at the same time	Level 3	2 years	No	Mostly exams at the end of the 2 years	<ul style="list-style-type: none"> <li>• University / College</li> <li>• Work</li> <li>• Higher or Degree Apprenticeships</li> </ul>
<b>APPRENTICESHIPS</b>	A real job with training and a salary	Level 2 Level 3 Level 4 Level 5 +	1 year +	Yes, Paid job with at least 20% studying	A mixture of practical and theory assessments and some exams	<ul style="list-style-type: none"> <li>• University / College</li> <li>• Work</li> <li>• Higher or Degree Apprenticeships*</li> </ul>
<b>T-LEVELS</b>	An advanced technical qualification designed by employers offering a blend of classroom/workshop learning and extended industry placement	Level 3	2 years	Yes, 80% classroom 20% industry work placement	A mixture of practical and theory assessments and some exams	<ul style="list-style-type: none"> <li>• Work</li> <li>• Higher or Degree Apprenticeships</li> <li>• Further study</li> </ul>
<b>VOCATIONAL (BTEC) QUALIFICATIONS</b>	Qualifications that teach students knowledge and skills specific to an industry of their choice	Entry Level Level 1 Level 2 Level 3	1 or 2 years depending on the level of study	Yes, there will be work experience for all Level 2 and Level 3 courses	Mainly coursework or practical assessments, some courses may have an exam element	<ul style="list-style-type: none"> <li>• University* / College</li> <li>• Work</li> <li>• Higher or Degree Apprenticeships*</li> </ul>

\*For those achieving a Level 3 qualification

# Course levels

Navigating all these qualifications and not knowing where they lead can be a bit of a minefield. Hopefully this will make things a little clearer.

## LEVEL ENTRY

Designed to help you to develop basic skills and knowledge, Entry Level courses are ideal if you don't have any existing qualifications.

**For Example:**

- Functional Skills
- Certificate of Achievement
- Personal and social development
- Supported work experience

## LEVEL 1

These courses introduce a specific subject or area of work, helping you to develop your understanding under full supervision.

**For Example:**

- Functional Skills and GCSEs
- Level 1 Progression Programme
- BTEC Level 1 Award, Certificate or Diploma
- NVQ Level 1

## LEVEL 2

Build your subject-specific skills and knowledge, under some supervision.

**For Example:**

- Functional Skills and GCSEs
- Intermediate Apprenticeship
- BTEC First Diploma
- NVQ / BTEC Level 2

(To study GCSE maths or English, students will need to have achieved a grade 2 or 3.)

## LEVEL 3

At Level 3, you'll refine your skills and knowledge, under minimal or no supervision, in preparation for higher-level study or work.

**For Example:**

- A Levels
- T-Levels
- BTEC Extended Diploma
- BTEC 90-credit Diploma
- Advanced Apprenticeship

(Students on a Level 3 course are required to take GCSE maths or English if they have not yet achieved a grade 4.)

## LEVELS 4,5, 6&7

These levels are equivalent to the first, second and third year of a "traditional" undergraduate degree. University might not be the right choice for everyone, so there are lots of other options that bridge these higher levels.

These include Higher National Diplomas (HNDs), Foundation Degrees and Higher Apprenticeships, to name just a few.

We provide a range of options for progression into Higher Education here at Loughborough College, but we won't bore you with the details just now.

Just know that we've got plenty of options here for you when you need them.

(Level 7 is a Masters Degree Level.)



# T-LEVELS

THE NEXT LEVEL QUALIFICATION

## WHAT ARE T-LEVELS?

**T-LEVELS** are two-year qualifications, endorsed by employers that were introduced in September 2020. They follow GCSEs and are equivalent to studying three A Levels.

**T-LEVELS** offer a high quality technical alternative to A Levels, Apprenticeships or other Post-16 courses and ensure that students gain the knowledge, skills and experience required to progress into skilled work, an Apprenticeship or further study.

They bring classroom learning (80% of the course) and an extended industry placement (20% of the course) together on a programme designed with businesses and employers.

**T-LEVELS** are aimed at advanced students (at least 5 GCSEs at grade 4 or above including English Language and Maths) who are aged 16-18 and recognise their strong interest for a technical industry.

## WHAT HAPPENS AFTER T-LEVELS?

Students will be able to progress into:

- **Skilled employment**  
Using skills gained from the relevant, industry specific work experience and knowledge
- **Higher academic education**  
Students will get UCAS points based on the overall T Level grade achieved
- **Higher achievement**  
Students will get a nationally recognised certificate with their overall grade of Pass, Merit, Distinction or Distinction\*

## LOUGHBOROUGH COLLEGE OFFERS

### T-LEVELS IN:

#### BUSINESS

Specialising in **Management and Administration**

#### CONSTRUCTION

Specialising in **Electrotechnical Engineering (Electrical Installation)**

#### EDUCATION AND CHILDCARE

Specialising in **Early Years Education and Childcare**

#### MAINTENANCE INSTALLATION AND REPAIR FOR ENGINEERING AND MANUFACTURING

Specialising in two areas of **Maintenance Engineering Technologies:**

- **Mechanical**
- **Electrical and Electronic**

#### DIGITAL

Specialising in **Digital Production, Design and Development**

#### HEALTH

Specialising in **Supporting the Adult Nursing Team**

#### MEDIA, BROADCAST, AND PRODUCTION

Specialising in **Creative Media Technician**

Find out more about these exciting new courses by visiting

[www.loucoll.ac.uk/t-levels-courses](http://www.loucoll.ac.uk/t-levels-courses)

# Apprenticeships

Can't decide whether to earn or learn?

Why not do both.

Our Ofsted Outstanding-rated apprenticeships are a great way to earn money whilst developing the necessary knowledge, skills and behaviours in a field of your choice.

Current apprenticeship areas include:

- Business and Administration
- Engineering and Manufacturing Technologies
- Health and Care and Education
- Information and Communication Technology (ICT)
- Leisure
- Retail and Commercial Enterprise
- Science Manufacturing Technologies

## DID YOU KNOW?

Apprentices get paid at least the national Apprenticeship minimum wage, but a lot of employers pay more

At least 6 hours a week 'off-the-job' study time either at College or in your place of work

There is no upper age limit

Apprenticeships include hands-on, practical learning with a qualification at the end

For our course list of available apprenticeship levels within our subjects, please visit our website:

[www.loucoll.ac.uk/courses/apprenticeships](http://www.loucoll.ac.uk/courses/apprenticeships)

# Apprenticeship levels explained

## L2

### INTERMEDIATE

**An intermediate Apprenticeship is equivalent to 5 GCSEs at Grade A-C/4-9.**

A great starting point for new entrants into the sector. You will learn the basics to enable you to fulfil a job role. Functional Skills Level 2 Maths and/or English are generally available to those without GCSEs at this level too, making it a great way to upskill and obtain additional qualifications you may not have.

## L3

### ADVANCED

**An Advanced Apprenticeship is equivalent to two A Level passes.**

Level 3 builds on any prior learning or qualifications you have and increases your experience and earning potential. By completing one of these advanced apprenticeships, it opens up doors for you to complete higher and degree level apprenticeships/qualifications in your chosen industry for even further career and education development.

## L4+

### HIGHER AND DEGREE

**Levels 4-6 are equivalent to Higher National Certificate (HNC), Foundation Degree and Degree Levels.**

Higher and Degree level qualifications are available to study through an Apprenticeship making it a great alternative route to attending University as you are earning a salary in a highly skilled job whilst working towards your qualification, all free of charge to you as the training costs are covered by the employer and/or the government.



# Careers and employability

With so much competition, securing a place at university or landing a job can be tricky, and exam results aren't enough on their own. That's where we come in!

On top of your qualification, we'll help you to develop the qualities and skills you need to stand out from the crowd.

## Careers advice

Whether you're thinking about applying for university or entering the world of work, our advisors are here for you. We'll work with you to help you define your strengths, work out your next steps and ensure that you feel confident about moving forward.

## Real work experience

Many of our courses include industry placement or a work experience element, designed to provide you with valuable hands-on experience. This will really give you the edge on your CV or university application, as many students leave formal education without any practical know-how.



Based on the college campus, the Job Shop is the go to place to find and apply for industry placements and apprenticeship vacancies. We have a team of experts in recruitment and employability that our students can book in with to receive information, advice and guidance to support their chances of being successful.

## CAREERS & ENTERPRISE HUB



## Careers and Enterprise Hub

The Careers and Enterprise Hub is a unique partnership between Loughborough College, Loughborough University and Charnwood Borough Council and was created as part of the Loughborough Town Deal.

Based in the heart of Loughborough Market Place, careers and employment experts from Loughborough College offer guidance and support to people who want to boost their careers or get in to work.

The team have access to local vacancies, and engage with a host of employers and services, which ensures they are able to support and advise our students accordingly.

They will also help you fill out applications and can provide plenty of handy CV and interview tips, to ensure that employers want to snap you up!

### DID YOU KNOW?

81% of employers value employability skills above other factors, including qualification or grade

# Proud to partner with...

Loughborough College is in partnership with many local, national and international companies.

We have a dedicated Business Development team who build relationships with employers, to offer students industry placements, work experience, Apprenticeship opportunities and other services.





# International students



Studying at Loughborough College as an international student allows you to experience life in the UK while studying for a qualification and developing your English language skills.

Full details on fees, accommodation and more can be found at [international.loucoll.ac.uk](http://international.loucoll.ac.uk) or contact our International team on +44 (0)1509 215 831 or [international@loucoll.ac.uk](mailto:international@loucoll.ac.uk)

## Teaching support

Our teaching staff are experienced in supporting learners throughout the transition to studying in the UK. Students are supported to develop both the language and study skills required for success both during their time at college and in their future education and career paths.

## Visa Support

Loughborough College is a government-approved Student Sponsor. Most international students will need to apply for a visa before coming to the UK and the international team can help you with this process.

# Study a Degree from a Top University at Loughborough College



Loughborough University

In partnership with



UNIVERSITY OF DERBY



UNIVERSITY OF LINCOLN

Sheffield Hallam University  
Knowledge Applied



Pearson

Visit [www.loucoll.ac.uk](http://www.loucoll.ac.uk) or email [undergradadmissions@loucoll.ac.uk](mailto:undergradadmissions@loucoll.ac.uk) to find out more

\*Terms and conditions apply

We work with a range of top UK universities who award our degrees, meaning students benefit from studying in the supportive environment of the College, but gain their degree certificate from the awarding university.

We offer scholarships of up to £1000 per year\*, plus a FREE iPad or Laptop to Loughborough College students progressing on to one of our degrees from a Level 3 qualification.

As well as working with top partners to offer a fantastic range of study programmes, we are also proud that students love their Loughborough College experience.

The College was recently awarded **Gold for Student Experience in the Teaching Excellence Framework (TEF)** and was significantly above sector benchmark in every category in the National Student Survey (NSS), placing Loughborough College amongst the top universities in the country for student experience.

The college also received a Silver rating for its student outcomes in the TEF, meaning student outcomes are typically very high quality and a Silver rating overall.



## COURSES IN DEVELOPMENT FOR 2024

- Strength and Conditioning
- Healthcare
- Criminology and Psychology
- Business Management and Marketing
- E Sports

Please contact us for more information

## CHOOSE FROM A RANGE OF DEGREES

- Business and Management
- Computing
- Early Years Education
- Engineering
- Public Services
- Sports Coaching
- Applied Sports Science
- Applied Sports Science with Management
- Sport and Exercise Therapy

**Loughborough**  
COLLEGE est. 1909

UNDERGRADUATE CENTRE



# Fees and funding

Funding your course may be easier than you think. To see if you qualify for funding support with your tuition fees, see the table below:

Please refer to the coloured columns in the table below if you are:

- In receipt of JSA or ESA or Universal Credits OR
- Unemployed and in receipt of means tested benefits OR
- Employed and earn less than £20,319 annual gross salary

AGE AND STUDENT CIRCUMSTANCE									
COURSE LEVEL	16-18	19-23 AND RECEIVING BENEFITS/LOW INCOME		19-23		24+ AND RECEIVING BENEFIT/LOW INCOME		24+	
		First time studying this qualification	Completed a qualification at this level previously	First time studying this qualification	Completed a qualification at this level previously	First time studying this qualification	Completed a qualification at this level previously	First time studying this qualification	Completed a qualification at this level previously
ESOL	★	★	★	★	★	★	★	★	★
ENTRY LEVEL	★	★	★	★	★	★	★	★	★
ELIGIBLE LEVEL 1	★	★	★	★	★	★	★	★	★
ELIGIBLE LEVEL 2	★	★	★	★	★	★	★	★	★
ELIGIBLE LEVEL 3	★	★	★	★	★	★	★	★	★
LEVEL 3 FREE COURSES FOR JOBS OFFER	★	★	★	★	★	★	★	★	★

★ Eligible for funding, no fee to pay

★ Not eligible for funding, likely to have to pay

★ Not eligible for free funding, however Advanced Learner Loans are an option instead

★ Many of our courses are eligible for funding, meaning that you would not need to pay tuition fees. For the full list of funded courses, contact student recruitment on **01509 618375** or **studentrecruitment@loucoll.ac.uk**

★ Our installment plan allows you to split the fees into up to four payments. A bursary fund is also available, covering up to 50% of course fees, up to the amount of £1000 (if you meet the eligibility criteria). This fund can also help with course costs, e.g. travel, stationery, childcare, kit or uniform.

★ If you are not eligible to claim funding, the alternative is to apply for an advanced learning loan. These loans are **ONLY** available for Level 3 and Level 4 courses and will cover the cost of your tuition fees.

## PLEASE NOTE:

The table provides generic funding guidance.

To ensure that you are entitled to funding, we will fully assess your eligibility prior to enrolling you.

Please ensure that you provide all prior qualifications held when asked to do so, as the college will retrospectively charge tuition fees should differing circumstances come to light.

Some courses are defined as full cost and as such do not qualify for free tuition.

Other courses are also not eligible for adult funding.

All of the above information applies to students who have resided in the UK/EEA for the past 3 years and are eligible for home funding.

## AGED 19+ AND INTERESTED IN ENGLISH OR MATHS COURSES?

Adult English and Maths courses (functional skills and GCSE) are funded courses. These courses are **FREE** if you haven't previously passed the qualification and are eligible for funded study in the UK.

# Application process

2  1

## APPLY

The first step in joining Loughborough College is to **submit an application form**, this can be done online or via a paper form. After receiving this, we will acknowledge receipt of your application.

## HAVE YOU GIVEN US ALL OF THE NECESSARY INFORMATION?

**Predicted Grades** – you need to provide us with your predicted grades so that we can ensure you are applying for a suitable course and level. For A Level applicants, where this is not provided your application will be put on hold.

**Fee Status** – We may ask you to complete and return a Fee Status questionnaire based on your Nationality or your right to remain in the country.

**Are your course choices right for you?** – where your predicted grades indicate that the course choice(s) are not appropriate, we reserve the right to amend this, where a suitable choice is available within the same area.

 3

## APPLICANT EVENT

In order to secure a place at Loughborough College, you must first **attend an Applicant Event** for your chosen course(s). **Your invite will be sent via email** so please ensure you check your spam/trash folders regularly.

Where you are unable to attend, it is important that we are notified beforehand (details on how to do this will be included in the email invite) so that we can invite you in to the next available event.

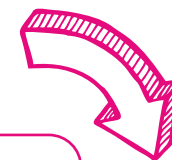
**N.B. If an applicant doesn't attend two events in a row, without notifying us beforehand, then we will automatically assume that they are no longer interested and their application will be withdrawn.**

4

## OFFERS

After attending an Applicant Event, the course leader will make a suitable course offer and this will be sent out to you. In order to secure a place on the chosen course, the acceptance of place form must be completed and returned to us within the **specified** timeframe.

Applicants who do not accept their offer may still be considered, however priority will be given to those who accepted their offer in the **specified** timeframe.



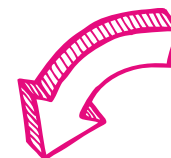
5

## PRE-PROGRAMME

In order to secure a place on the chosen course, students must then **attend** a Pre-Programme experience (taster day) OR notify us with a satisfactory explanation as to why they are unable to attend. These events are **likely to be in late June/early July** and they are really important for students to attend to enable them to get a taste of what being a student at Loughborough College is like.

**Sadly however this event is not aimed at Parents/Guardians/Carers. Sorry – all the fun goes to our students for this one!**

6



## REGISTRATION AND ENROLMENT

First you will be invited to complete an Online Registration, where you will be asked to log in and provide us with your personal details. You must also provide us with ID evidence and an appropriate photograph of yourself for your student ID badge.

Then on **National Results Day (Thursday 22nd August 2024)** you will be asked to log in again and upload proof of your results.

On, or shortly after, National Results Day you will be invited in to a Sign Up event with your chosen course area and this is where you formally sign up for your course. You will meet with a member of the teaching team who will assess your results and discuss appropriate courses.

**If you do not get the grades that you are expecting then please don't worry! We will work with you to help you find an alternative option.**



# Study with us

From **T Levels** and **BTECs** to **Apprenticeships** and **A Levels** we offer a broad range of qualifications to prepare you for your future career.

Our **Sixth Form** offers A Level subjects in Arts, Humanities, Social Sciences, Professional Studies, Mathematics and Science.

## SCAN THE QR CODE ON EACH PAGE

to visit our **website** or pick up a **course booklet** for detailed further information.



## A Levels and Sixth Form







**Barbering and Hairdressing**



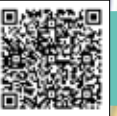
**Beauty Therapy**



**Business**



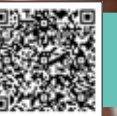
**Hospitality and Travel**



**Childcare**



**Health and Social Care**



**Public Services**





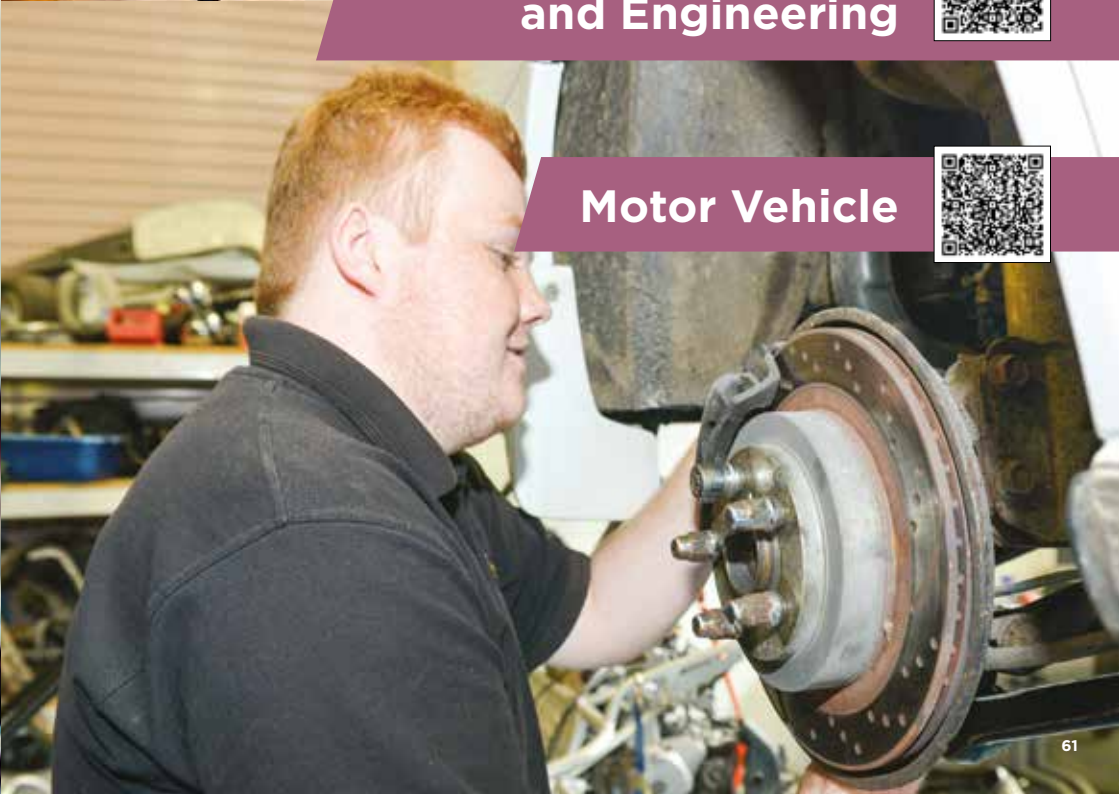
**Creative Arts**



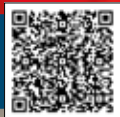
**Electrical Installation  
and Engineering**



**Motor Vehicle**



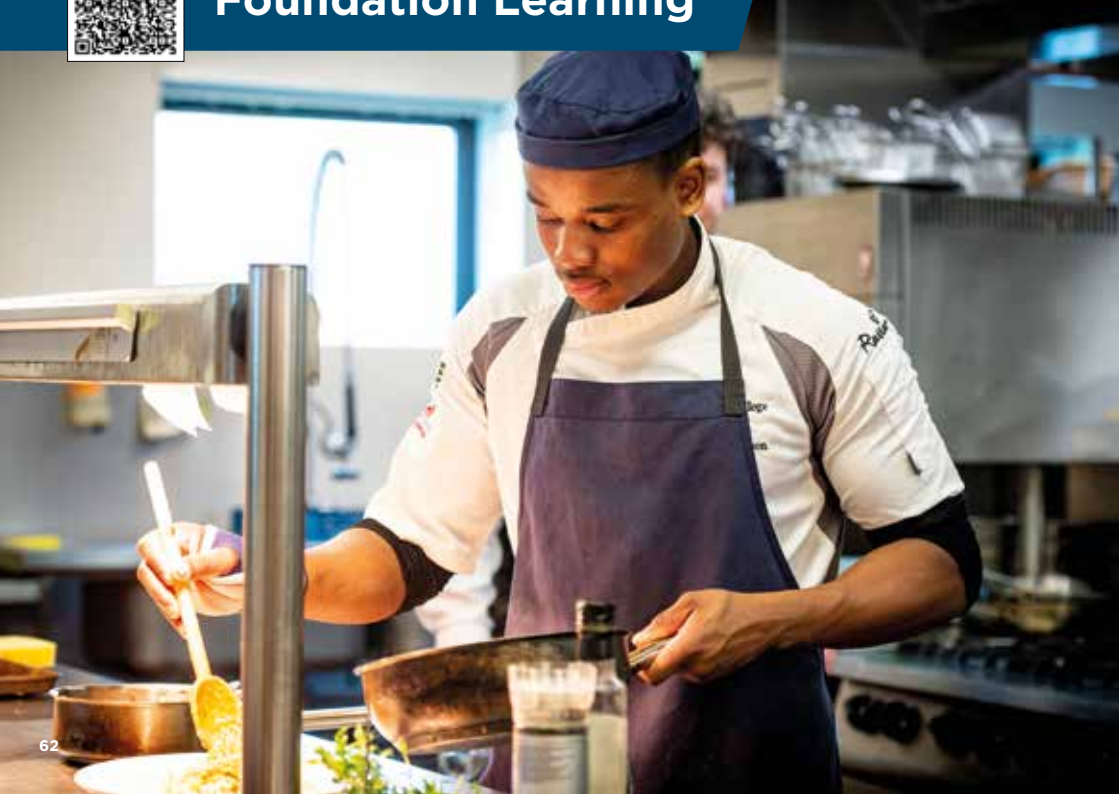




**Foundation Learning**



**Games Design and  
Media Production**







**Sport and Esports,  
Enterprise and Entrepreneurship**



**Access to Higher Education**





# STEM

SCIENCE / TECHNOLOGY / ENGINEERING / MATHS

At Loughborough College, we actively promote STEM (Science, Technology, Engineering and Maths) subjects and learning experiences for all learners and support progression into careers in these industries. We believe STEM education is essential for the evolving world that we live in today.

Working closely with schools, universities and employers, our aim is to inspire students to consider STEM degree courses and careers, and to develop important transferable skills such as critical thinking, problem-solving and teamwork, that are applicable across a wide range of professions.



# Can we help?

## WE'RE HERE TO ANSWER YOUR QUESTIONS

### FINANCE HELP AND ADVICE

01509 618375  
[studentfinance@loucoll.ac.uk](mailto:studentfinance@loucoll.ac.uk)

### INTERNATIONAL TEAM

+44 (0)1509 618045  
[international@loucoll.ac.uk](mailto:international@loucoll.ac.uk)

### LEARNER SUPPORT, WELFARE AND DEVELOPMENT

01509 618313  
[support@loucoll.ac.uk](mailto:support@loucoll.ac.uk)

### RADMOOR CHILDCARE

01509 515456  
[nursery@loucoll.ac.uk](mailto:nursery@loucoll.ac.uk)

### STUDENT RECRUITMENT

01509 618375  
[studentrecruitment@loucoll.ac.uk](mailto:studentrecruitment@loucoll.ac.uk)

### CAREERS ADVISOR

01509 618262  
[careers@loucoll.ac.uk](mailto:careers@loucoll.ac.uk)

# FAQs

## **I'M INTERESTED IN A LEVELS BUT I'M NOT SURE WHICH ONES**

That's okay! We know that deciding on A Levels can be a long process and that you can change your mind—a lot. When you initially apply, we'll ask you for your options, but you're not tied down to these subjects. We'll confirm your final choices at a later date.

## **WHAT FUNDING IS AVAILABLE FOR TUITION FEES?**

There are no tuition fees for full-time students under 19 who are enrolled on a Further Education course. If you're over 18, see page 52 for guidance.

## **I NEED EXTRA SUPPORT WITH MY STUDIES. WHAT HELP CAN I GET AT LOUGHBOROUGH COLLEGE?**

There are staff on hand to help you with your academic progress. Our specialist advisors can also help with additional requirements, and we have a fantastic team of learning support assistants who can provide in-class assistance.

## **WHAT HAPPENS IF I DON'T GET THE GRADES I WAS EXPECTING?**

If you don't get your predicted results, don't panic! Our Student Recruitment team is on hand to help, and we'll make sure that we find another course that is suitable for you.

## **CAN I WORK A PART-TIME JOB WHILST STUDYING?**

We recommend no more than 8-9 working hours per week. Research has shown that 10+ hours can negatively affect academic achievement, so make sure you're prioritising correctly.

## **CAN I SPEAK TO SOMEBODY ABOUT THE COURSES YOU OFFER?**

Yes, we have a dedicated Student Recruitment advisory team who will be happy to provide you with the information on our courses and answer any questions you may have.

Give us a call on **01509 618375** or e-mail us at **admissions@loucoll.ac.uk**

## **CAN I CHOOSE TO DO ANOTHER COURSE IF I CHANGE MY MIND?**

Yes. You can change your course before enrolment by contacting the Student Recruitment team on **01509 618375**. If you've already started your course and find that it isn't right for you, don't worry; there will be opportunities for you to discuss suitable alternatives.

## **DOES THE COLLEGE OFFER FINANCIAL HELP?**

We offer a bursary fund to help with additional costs associated with your course, such as transport, kit or uniform, and childcare costs. Eligibility is based on household income. You don't need to request a bursary application form, as they are sent to everyone who has applied to study with us (usually in July/August). Further information is available here: **[www.loucoll.ac.uk/student-services](http://www.loucoll.ac.uk/student-services)**

## **WHAT'S THE DEADLINE FOR SUBMITTING AN APPLICATION?**

As a college we would advise you to apply by Friday 31st May 2024. This will allow you to get the most out of what we can offer you, helping you to make the important decisions about the courses you're interested in. However, we will continue to consider applications made after this date.

# Easy to find



## Car

With the M1 only three miles away, you can get into Loughborough easily from all over the country. We have limited parking on site which is only available on request and usually under exceptional circumstances. There is ample parking a short walk away in Loughborough Town Centre.

## Walk

We're only a ten-minute walk from Loughborough town centre, 25 minutes from the train station, and 15-20 minutes from the town centre bus stops. We even have secure on-site bicycle storage.

## Bus

We're connected by regular direct buses running from Leicester, Nottingham, Derby, Melton Mowbray and Ashby. Visit [www.traveline.info](http://www.traveline.info) for more details. We may be able to help with travel passes - give us a call on **01509 618375**.

## Train

Loughborough train station connects regular rail services from Leicester, Nottingham and Derby. The Ivanhoe line offers direct travel and also serves several of the smaller villages between Leicester and Loughborough. The station is about 25 minutes' walk away from campus, or there's a shuttle bus running every ten minutes to save your legs.

**For everyone aged 16 and 17**, the **NEW 16-17 SAVER RAILCARD** can be purchased for £30 and will offer a **50% discount** on rail travel, making it cheaper to get to school, college and work.

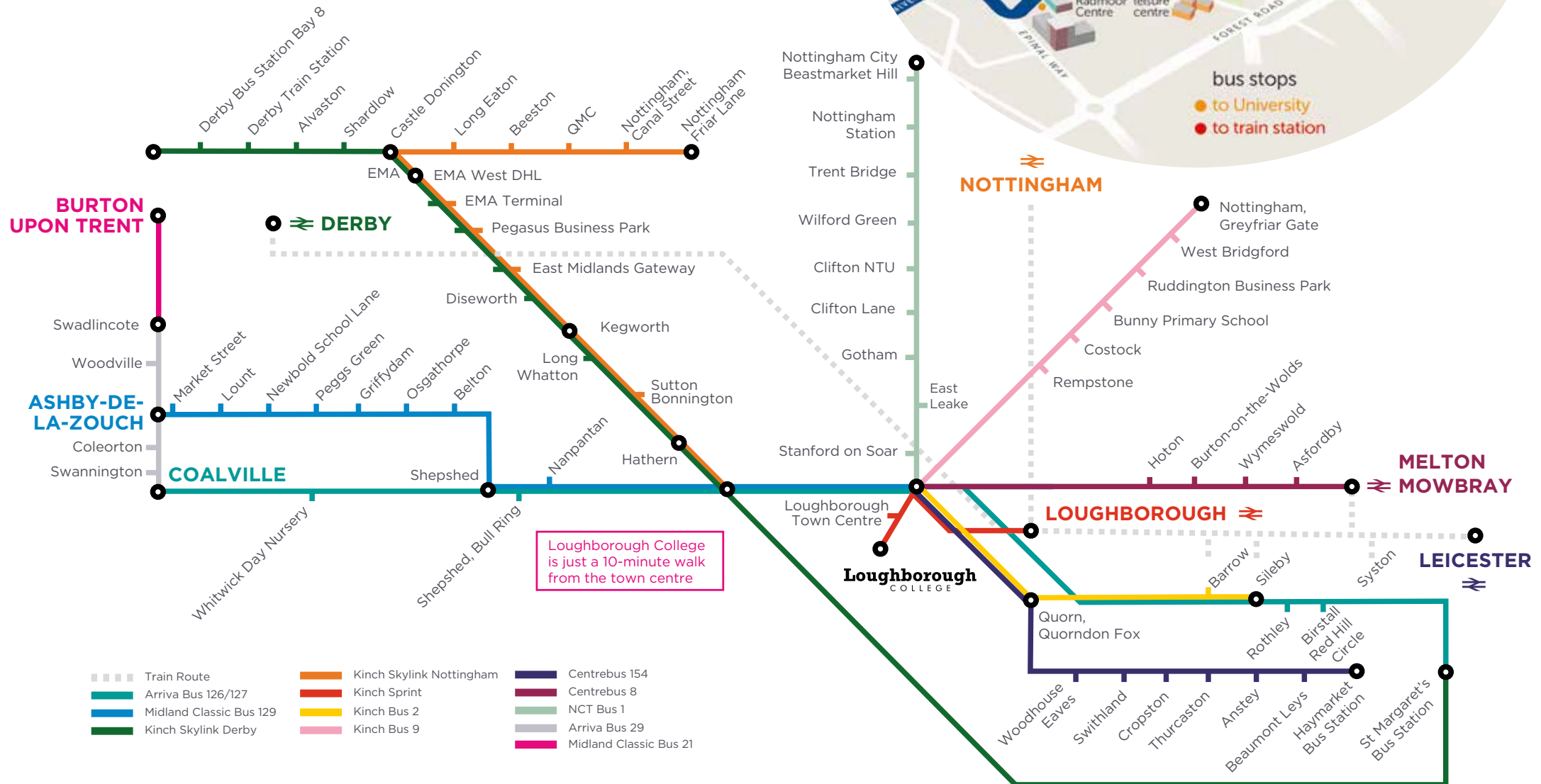
**For detailed maps, timetables and information on how to get to Loughborough College from other parts of the UK or abroad, visit the 'How to find us' section of our website.**



# How to get here

We're easy to reach by bus from local villages, towns and cities. Take a look at our bus map or find out more at [www.traveline.info](http://www.traveline.info)

Bus routes shown are a guide only and are subject to change. Please check with your bus service provider for current routes and timetables.



# Bus passes

Loughborough's central location makes it really easy to get to and from anywhere in the East Midlands. See our bus map for routes. For the most up-to-date prices and information, visit the bus operators' websites or [www.traveline.info](http://www.traveline.info)

**PLEASE NOTE:** Bus passes must be bought directly from the bus operator and are not available from Loughborough College.

## Travel Subsidy

A subsidy is available from the college to cover the cost of public transport. It can be used to pay for daily, weekly, monthly or annual tickets. For full details or to apply, e-mail the Bursary team: [studentfinance@lough.ac.uk](mailto:studentfinance@lough.ac.uk)

CIRCUMSTANCE	AGE 16-18	AGE 19+
Outside LE11 postcode	★	★
Within LE11 postcode	★	★
Household income below £31,000	★	★
Household income above £31,000	★	★
For use towards buses and trains	★	★
For use towards cars and mopeds	★	★
Unable to use public transport for health reasons	★	★
Subsidy amount	£450	£450

★ Eligible    ★ Ineligible

Please note, this information is correct at the time of print (September 2023) and subject to change.

## Tips

- Many bus companies offer travel passes covering wider zones, or passes allowing low-cost travel across multiple bus operators.
- Kinchbus sell travel passes covering Loughborough town only, giving a cheaper option for local students, and Arriva offer 'Student Saver Tickets' for the academic year.
- Paying the full cost up front gives the biggest overall discount, while paying monthly by Direct Debit offers more affordable payments.
- If your journey requires taking more than one bus, use the same operator where possible. This may mean a little more walking but will be considerably cheaper.

## Kinchbus

Covering Derby, Nottingham, Loughborough and Leicester, including Skylink buses. Combined Kinchbus and trentbarton student passes are available, covering more of Nottinghamshire. Academic year passes can be paid for up front or by Direct Debit and offer 24/7 travel. For a discount, contact Kinchbus customer services and tell them that you are a Loughborough College student. **01509 815 637** or [www.kinchbus.co.uk](http://www.kinchbus.co.uk)

## Nottingham City Transport

Covering Nottingham and several smaller towns. The availability of student academic year passes should be confirmed with NCT directly. **0115 950 60 70** or [www.nctx.co.uk](http://www.nctx.co.uk)

## Centrebús

Covering Leicestershire and offering 24/7 travel throughout the academic year. For a special discount, use the code "LOCOLL154" or "LOCOLL8" when purchasing your student travel pass. **0844 351 1120** or [www.centrebús.info](http://www.centrebús.info)

## Arriva

Covering Coalville, Ashby-de-la-Zouch and Leicester, along with the smaller towns in between. 'Student Saver Tickets' for the academic year are available **0344 800 4411** or [www.arrivabus.co.uk](http://www.arrivabus.co.uk)

## Midland Classic

Covering Ashby-de-la-Zouch and Shepshed, this operator only offers daily tickets. **01283 500228** or [info@midlandclassic.com](mailto:info@midlandclassic.com) or [www.midlandclassic.com](http://www.midlandclassic.com)



LOUGHBOROUGH COLLEGE





#### Disclaimer

Information provided is correct at the time of print and the college accepts no liability for errors or omissions.

Details can be subject to change without notice, including the provision of courses, times, and dates. Fees and charges can be levied.

## FOLLOW US FOR UPDATES



**FACEBOOK**

LoughboroughCollege



**X**

@lborocollege



**INSTAGRAM**

@lborocollege



**YOUTUBE**

@loughboroughcollege



**TIKTOK**

@loughboroughcollege

### **Loughborough College**

Radmoor Road  
Loughborough  
Leicestershire  
LE11 3BT

01509 618375  
info@loughcoll.ac.uk  
www.loughcoll.ac.uk