

bus routes

Derby

KINCH SKYLINK BUS
Every 30 minutes from the bus station

PAUL S. WINSON BUS 129
Every 2 hours

Ashby-de-la-Zouch

ARRIVA BUS 126
Every 10mins from Shepshed
Every 30 mins from Coalville

Coalville

Loughborough COLLEGE est. 1909

KINCH SPRINT
Every 10 mins

Town Centre

Nottingham

KINCH BUS 9
Every 30 mins

NCT BUS 1
Every 15-30 mins

KINCH SKYLINK BUS
Every hour

Melton Mowbray

CENTREBUS BUS 8
Every hour

KINCH BUS 2
Every 30 mins

CENTREBUS BUS 154
Every 5 mins

Leicester

KINCH SKYLINK BUS
Every 30 mins

ARRIVA BUS 126/127
Every 10 mins

Our academic bus pass costs from just **£99***

* Terms and conditions apply.
† Please note that the travel information provided is only a guide and details are subject to change.

Disclaimer
Information provided is correct at the time of print and the College accepts no liability for errors or omissions. Details can be subject to change without notice.

Loughborough College
Radmoor Road
Loughborough
Leicestershire. LE11 3BT

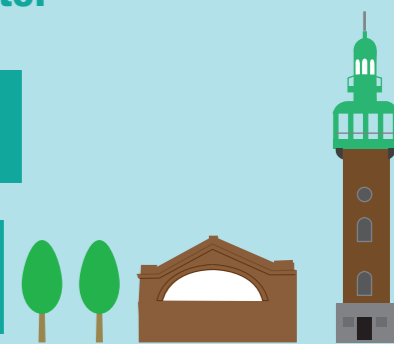
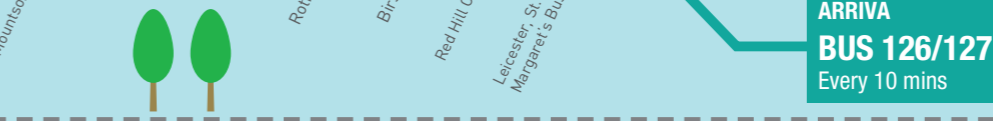
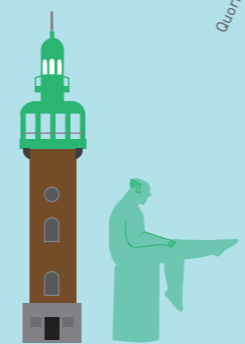
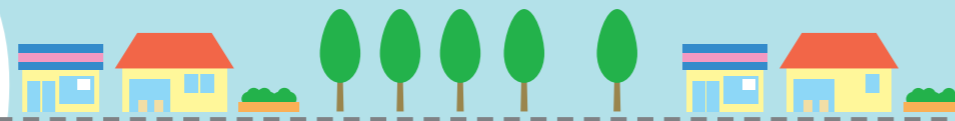
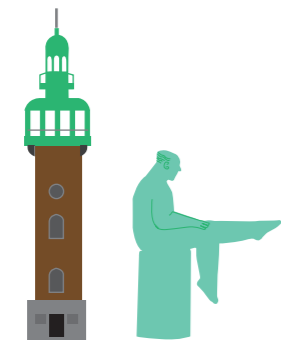
T: 01509 618375

info@loucoll.ac.uk

www.loucoll.ac.uk

Loughborough College

@LboroCollege



Loughborough College student travel guide

Our academic bus pass costs from just **£99***

2014/15

Loughborough
COLLEGE

* Terms and conditions apply

Loughborough College is accessible from all parts of Leicestershire and surrounding counties with an excellent network of public bus services. We have gone the extra mile to ensure that our students are supported with travel costs making getting to College cheaper and easier. If your household income is less than £45,000, you could be entitled to a bus pass at a discounted rate.

option one public service travel pass

Some bus companies offer travel passes with additional routes and usage times which students may benefit from.



www.arrivabus.co.uk
Tel: 0344 800 44 11

Annual Midland Student Saver Ticket available to all ages at a cost of £475* per year which can be used throughout the East Midlands on all Arriva buses 24/7 - evenings, weekends, half terms and bank holidays - in addition to your travel to College.

This offers amazing value for money. Apply online by visiting their website for further details.

* Tariffs for 2014/15 not yet published by Arriva and so are subject to change

ARRIVA MIDLAND STUDENT SAVER TICKET (24/7 PASS)

Full Cost of Bus Pass	Amount Loughborough College will reimburse		End Cost to Student	
	Household income less than £30,000	Household income between £30,000 and £45,000	Household income less than £30,000	Household income between £30,000 and £45,000
£475*	£275	£100	£200	£375



www.kinchbus.co.uk
Tel: 01509 815637

Kinchcards available to all ages which allows unlimited travel including evenings, weekends and holidays in addition to your travel to College.

Available to travel on any Kinchbus service between the points chosen. Services include the use of Kinch Sprint Bus to and from the College and the Skylink bus route.

The cost and options are:	One off payment	10 monthly DD's
Leicester - Loughborough	£400.00*	£40.00*
EMA or Nottingham - Loughborough	£450.00*	£45.00*
Network	£495.00*	£49.50*

Apply direct to Kinch by telephoning them.

* Tariffs for 2014/15 are available to Loughborough College students only

KINCHKARD - NETWORK PASS (24/7)

Full Cost of Bus Pass	Amount Loughborough College will reimburse		End Cost to Student	
	Household income less than £30,000	Household income between £30,000 and £45,000	Household income less than £30,000	Household income between £30,000 and £45,000
£495	£295	£120	£200	£375

please note:

You will need to apply direct to the bus company or local authority for your travel pass. You will then need to contact the College for reimbursement.

option two

apply through your local council

All students aged between 16 and 18 who are offered a place at Loughborough College may be eligible to apply for a local authority travel pass. Please note that you will have to apply for a new travel pass for each year of your chosen course. Determining which local authority you belong to is based on who your household council tax is paid to. You need to submit your application direct to your local authority as soon as possible to reserve your travel pass. Your local authority will decide if you are eligible and inform you directly.

Leicestershire County Council

www.leics.gov.uk
Tel: 0116 3050 002

16-18 year olds need to apply online direct to Leicestershire County Council (from April 2014) to determine eligibility for a subsidised travel pass. Cost of the travel pass is £425 and can be paid by direct debit for up to eight months at approximately £53.13 per month.

The first payment will be taken in September 2014.

Travel is restricted to term-time College days and your specific route only.

Closing date for applications is 27th June 2014**

LEICESTERSHIRE COUNTY COUNCIL ACADEMIC BUS PASS

Full Cost of Bus Pass	Amount Loughborough College will reimburse		End Cost to Student	
	Household income less than £30,000	Household income between £30,000 and £45,000	Household income less than £30,000	Household income between £30,000 and £45,000
£425	£326	£226	£99	£199

Leicester City Council

www.leicester.gov.uk
Tel: 0116 305 8777

Subsidised travel is no longer provided by Leicester City Council for 16-18 year olds to travel to Loughborough College.

Please contact Loughborough College to discuss options.

Nottingham City Transport

www.nctx.co.uk
Tel: 0115 950 6070

In 2013/14 Nottingham City Transport offered an academic bus pass to 16-18 year olds at a cost of £349 to enable students to travel to Loughborough. Travel is restricted to term-time College days and your specific route only.

The closing date for this offer was October half term**

To date they have not confirmed this will be available for 2014/15 - please contact them direct

NOTTINGHAM CITY TRANSPORT ACADEMIC BUS PASS

Full Cost of Bus Pass	Amount Loughborough College will reimburse		End Cost to Student	
	Household income less than £30,000	Household income between £30,000 and £45,000	Household income less than £30,000	Household income between £30,000 and £45,000
£349	£250	£150	£99	£199

**Late applications will be considered, however, availability cannot be guaranteed after the closing date. Please note that transport may only be offered from the nearest pick up point rather than village of residence. If your application is received after the closing date, the local authority will not guarantee that your pass will be available by the beginning of September resulting in you being responsible for your travel costs until your pass is available. Your travel pass and full details of your route into college will be provided in most cases by your local authority and are not available until August 2014 until operational planning is completed.

financial assistance

16-18 Bursary Fund
(Students aged 16-18 on 31st August 2014)

Discretionary Adult Learner Support Fund
(Students aged 19 and over as at 31st August 2014)

You may be eligible to apply for assistance with your costs if you are:

- Enrolled on a full-time or part-time course funded by the Government
- Studying your first full Level 1, first full Level 2 or first full Level 3 qualification
- Able to prove your household income including benefits
- Able to provide proof of your payment arrangement with your travel pass provider

Leicestershire County Council

A 'Low Income Scheme' could qualify you for free travel, saving £425 Conditions apply Please visit www.leics.gov.uk for details

Nottinghamshire County Council

A 'Travel Allowance Grant' of up to £150 can assist with the cost of travel. Conditions apply. Please visit www.nottinghamshire.gov.uk for details